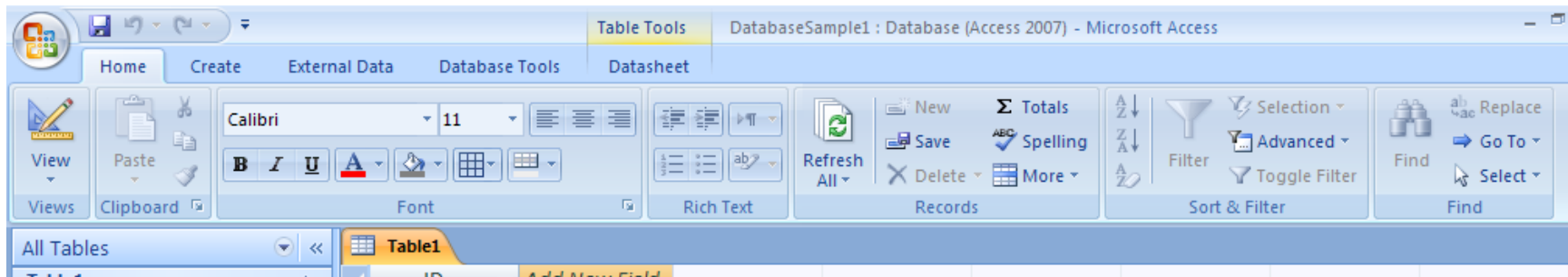




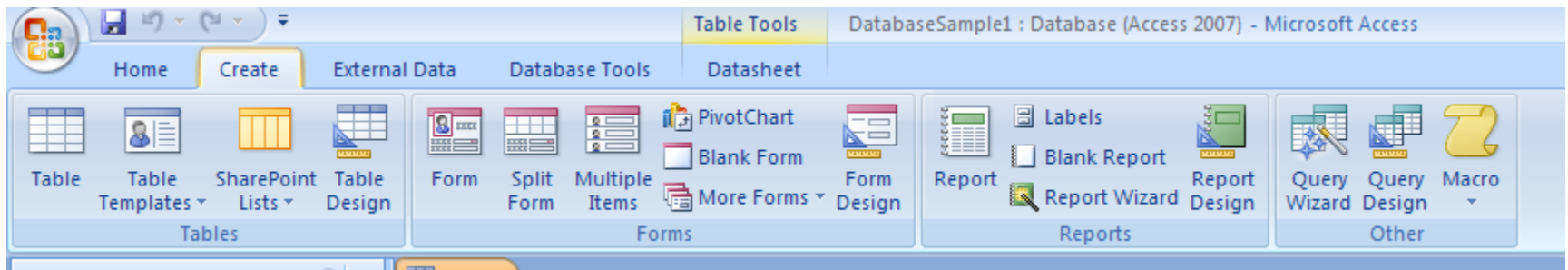
Class Notes:

Access

Home



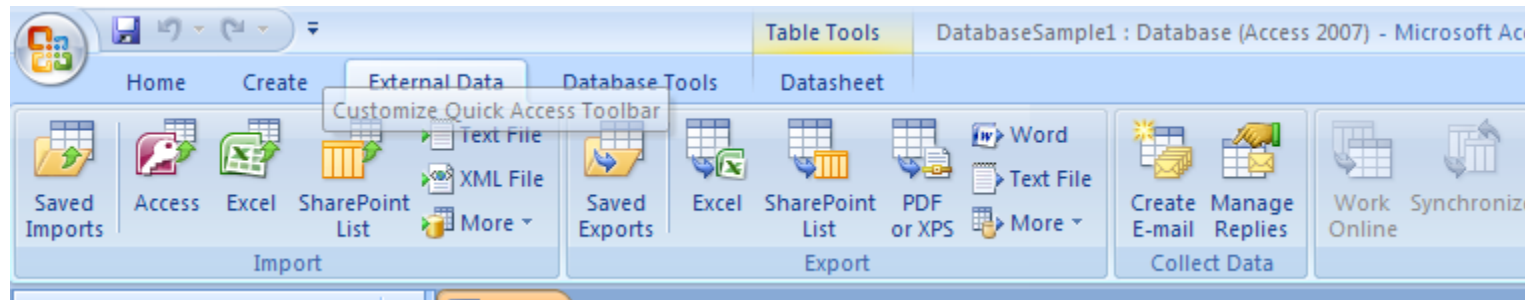
Create



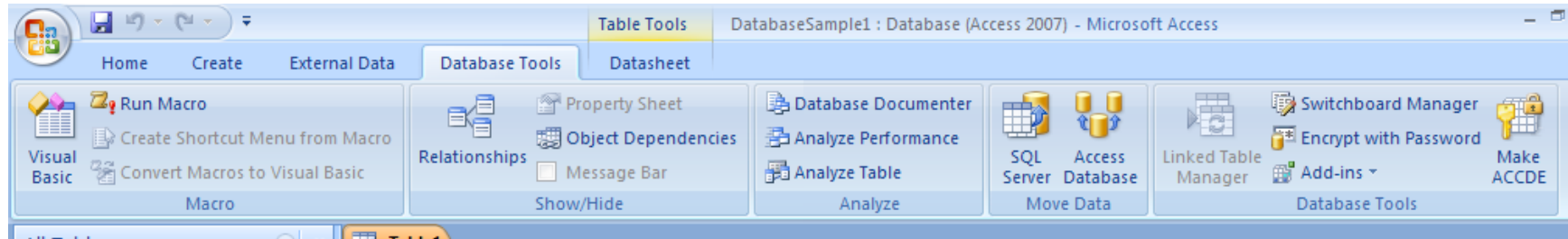


Class Notes:

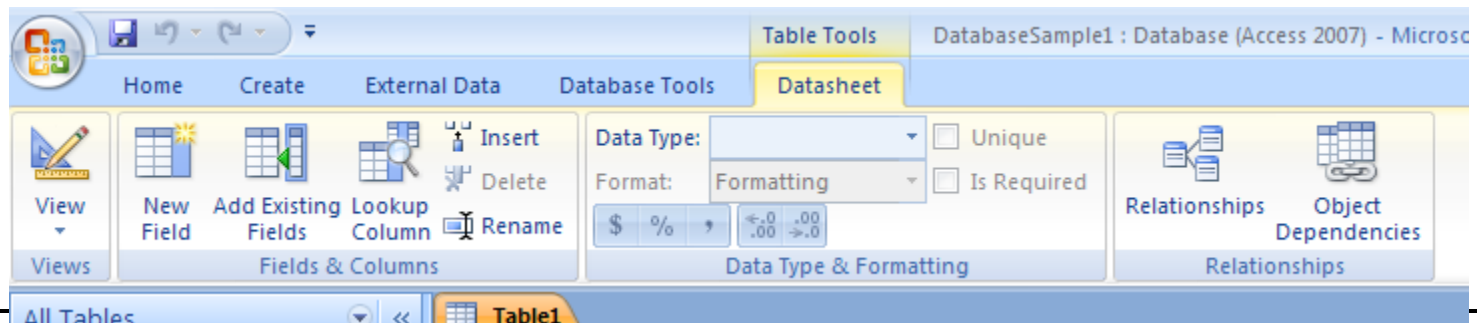
External Data



Database Tools

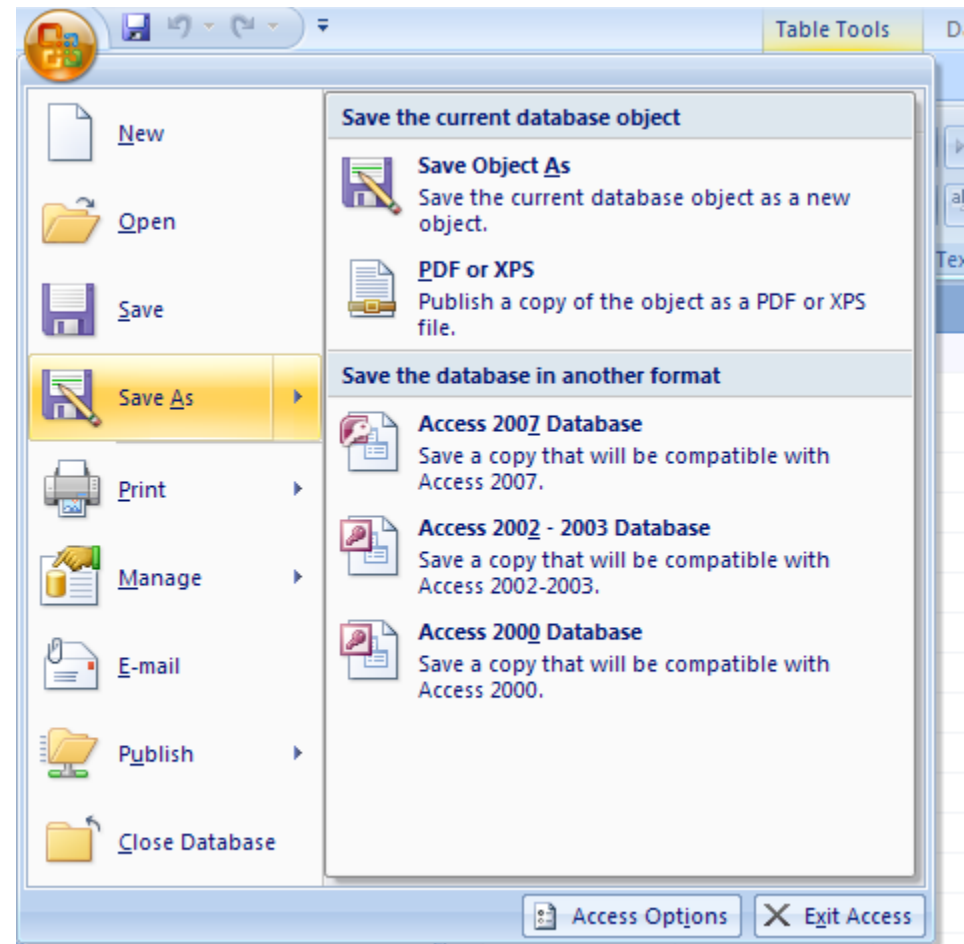
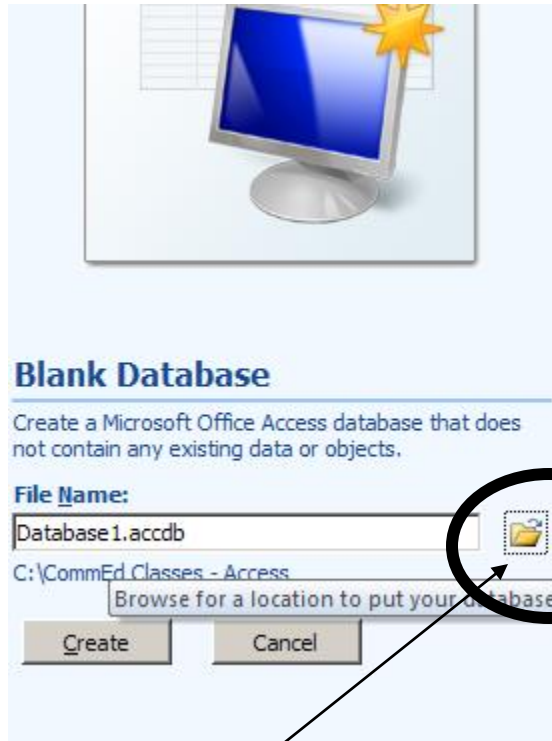


Datasheet



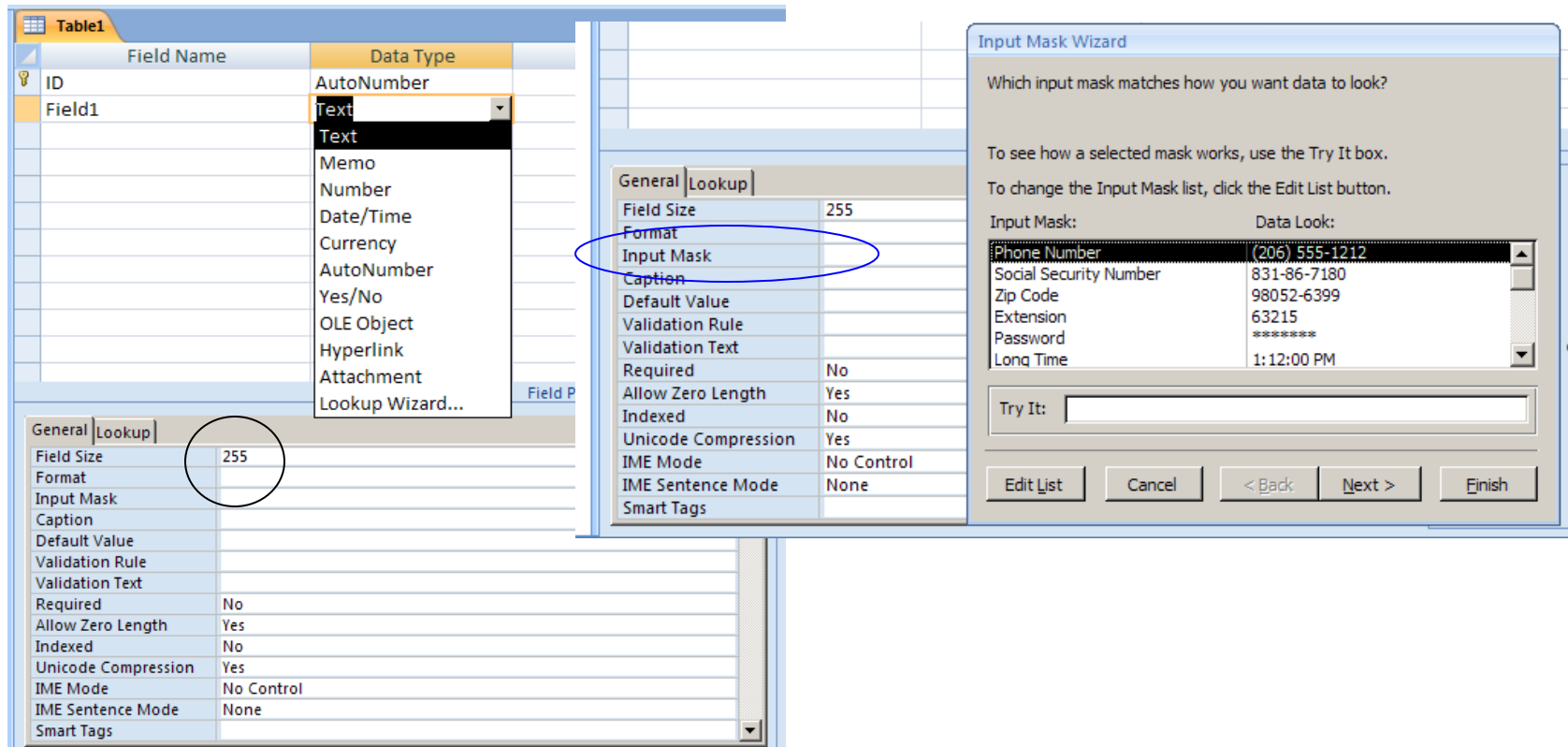


Class Notes:





Class Notes:



The screenshot shows the Microsoft Access interface. On the left, the 'Table1' design grid is visible with two fields: 'ID' (AutoNumber) and 'Field1' (Text). The 'Field1' data type dropdown is open, showing options like Text, Memo, Number, Date/Time, Currency, AutoNumber, Yes/No, OLE Object, Hyperlink, Attachment, and Lookup Wizard... The 'Field Properties' task pane is open for 'Field1', showing the 'General' tab with 'Field Size' set to 255. The 'Input Mask' property is highlighted with a blue circle. On the right, the 'Input Mask Wizard' dialog box is open, asking 'Which input mask matches how you want data to look?'. It lists several masks: 'Phone Number' (206) 555-1212, 'Social Security Number' 831-86-7180, 'Zip Code' 98052-6399, 'Extension' 63215, 'Password' ***** (with a 'Show Password' checkbox), and 'Long Time' 1:12:00 PM. The 'Try It:' field is empty. Buttons for 'Edit List', 'Cancel', '< Back', 'Next >', and 'Finish' are at the bottom.